



ArtemisIRIS

Diver helmet mounted sonar imaging system, for improved situational awareness in low visibility underwater environments.

SYSTEM FEATURES

- + Dual frequency, ultra-high resolution helmet mounted sonar
- + High resolution binocular display, using Wilcox bracket
- + Removable battery
- + Ergonomic weight distribution
- + User port for external accessories

SOFTWARE FEATURES

- + Intuitive three button software interface
- + Range/Gain control (with automatic frequency adjustment)
- + Log and still image capture (internal or external storage)
- + Compass ribbon overlay

IRIS



TACTICAL SONAR SYSTEM FOR IMPROVED VISIBILITY IN CHALLENGING CONDITIONS

artemis

IRIS

enquiries@blueprintsubsea.com
www.blueprintsubsea.com



Part of the
aion
GROUP

SPECIFICATION

MECHANICAL

Helmet Compatibility	Gentex Ops-Core Others Available on Request
System Weight	Neutrally Buoyant (in Water)
Depth Rating	200m
Construction	PEEK, Anodised Aluminium
Temp. Range (Operating)	-5°C to +40°C
Buttons	3x Piezo Button Interface

SONAR

Oculus Model*	M750d	M1200d	M3000d
Frequency	750kHz/1.2MHz	1.2MHz/2.1MHz	1.2MHz/3.0MHz
Range Max	120m/40m	40m/10m	30m/5m
Range Min	0.1m		
Horizontal Beam	130°/130°	130°/60°	130°/40°
Vertical Beam	20°/20°	20°/20°	20°/20°

BATTERY

Operating Time	Approx. 2 Hours Typical Use
Chemistry	Li-ion
Capacity	14.5V 3.3Ah (48Wh)

ELECTRONICS

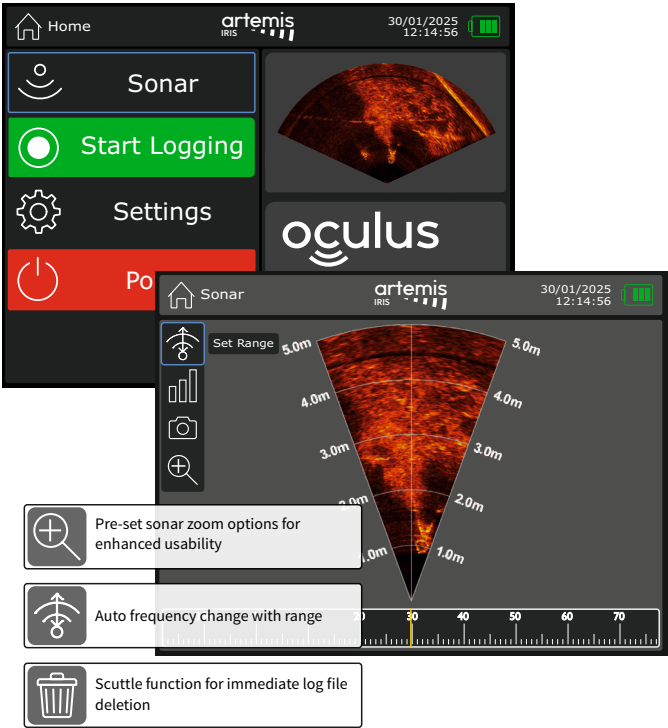
Screen Resolution	800 x 600
Connector	USB User Port, MCBH-8-FS
Storage	25GB Internal or 32GB Removable Storage

DISPLAY

Display	Full Colour
Lenses	Interpupillary Distance Optimised
Resolution	800 x 600 Pixels Per Eye



HEAD MOUNTED DISPLAY



Please note that all functions & specifications may be subject to change in line with our policy of continual product development.

*Typically supplied with an M3000d Sonar

DA-150-P05000-03

Blueprint Subsea
The Clock Tower Business Centre
Low Wood, Ulverston
Cumbria, LA12 8LY

enquiries@blueprintsubsea.com
www.blueprintsubsea.com



Part of the
aion
GROUP