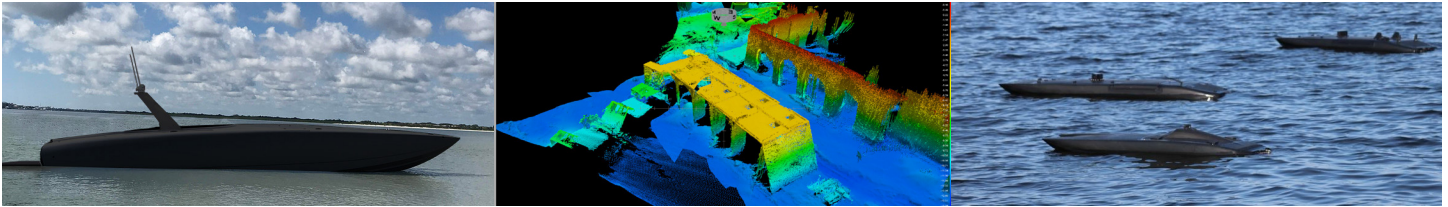


# MANTAS T-Series



Multi-mission • Real-time • Autonomous • Cross-domain



## Missions

- Harbor and Port Security / Coastal Surveillance
- Intelligence, Surveillance, Reconnaissance (ISR)
- Maritime Interdiction Operations
- Mine Countermeasures Search/Detect/Identify
- Bathymetric mapping
- SOF Near shore and Riverine Operations
- Humanitarian Assistance, Disaster Recovery
- Electronic Warfare (EW) - Active/Passive
- Expeditionary Warfare / Littoral Warfare Detect/Identify
- Environmental monitoring
- Asset Inspection



**High performance electric propulsion** capable of high-speed surface operations actively engaging maritime environments

**Highly maneuverable and stable** operating in areas not possible for manned or unmanned craft

**Modular**, accepting interchangeable payloads making it a multi-role platform which is an all-in-one inspection, monitoring and surveillance solution

**Portable and ruggedized** making for simple mobilization, operation and demobilization

**Payload and comms agnostic**, accepting a variety of kits



T6



T12



T38



T8



T24



T50

**MANTAS T-Series Unmanned Surface Vessels (USV)**

Class	X - Unmanned Man-Portable			Harbor	Fleet	Medium
<b>Specifications</b>	T6 (2m)	T8 (2.5m)	T12 (3.6m)	T24 (7m)**	T38 (11m)**	T50 (15m)**
Length	6 ft	8 ft	12 ft	24 ft	38 ft	50 ft
Width	1 ft 8 in	2 ft 2 in	3 ft	8 ft 6 in	11 ft	12 ft
Height	10 in	12 in	14 in	33 in	40 in	60 in
Draft	6 in	7 in	7 in	14 in	18 in	22 in
Craft Weight	56 lbs	125 lbs	210 lbs	3,400 lbs	6,800 lbs	13,000 lbs
Max Payload Wt	18 lbs	40 lbs	140 lbs	1,800 lbs	4,500 lbs	10,000 lbs
<b>Performance</b>						
Propulsion	Twin Screw Electric			Twin Screw Hybrid Electric Diesel		
Burst Speed	60 kts	50 kts	40 kts	70 kts†	80 kts†	80 kts†
Cruise Speed	8 – 20 kts			25 kts†	25 kts†	30 kts†
Cruising Range	50 nm	50 nm*	60 nm*	400 nm	1,200 nm	1,800 nm
Ocean Capable		SS3+	SS4+	SS4+	SS5+	SS5+
Build Status	Upon qty. order w/ lead time	Available now		Upon order w/ lead time		
*Available with optional solar options to extend cruise range				**MANTAS classes can be optionally manned †Burst and cruise speeds can be tuned to customer-specific missions		