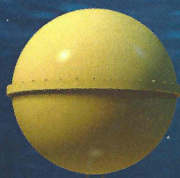


Protecting and Preserving HMAS AE1



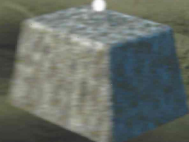
Current profiler
downward
looking



Oceanographic
data collection



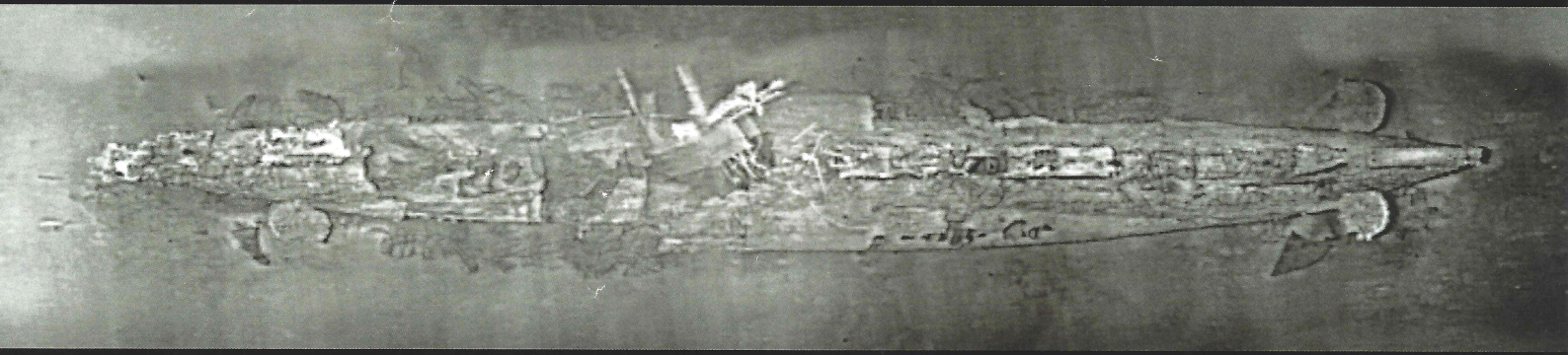
Acoustic release
for recovery



We need your help to
obtain environmental
data from AE1 site.

Join the team

- ANMM
- SIA
- Imbros
- Blue Zone.



Mosaic From AUV photographs, image courtesy of Fugro.

The men of HMAS AE1 were found in December 2017 on the first day of a search using an Autonomous Underwater Vehicle launched from the Fugro Equator.

AE1 with her crew of 35, vanished without trace on 14 September 1914, whilst defending the RAN ships occupying the German Colony based on Rabaul.

The wreck was examined in April 2018 using a Remotely Operated Vehicle, fitted with high definition still and video cameras and deployed from the Research Vessel Petrel, very generously made available by Paul G Allen.

These successful expeditions were led by Find AE1 Ltd, supported by the Submarine Institute of Australia, Royal Australian Navy, Australian National Maritime Museum. The Silentworld Foundation and its sponsors funded half of the search costs.

A full Report is available on the ANMM's website.

The wreck lies in an area of complex, tropical ocean currents and more specific data is required to accurately predict the rate at which the wreck will deteriorate as a consequence of movement of water, the salinity levels and water oxygen content.

It is intended the project will be run by the Australian E Class Submarine Foundation (AESMF) formed to manage work on both AE1 and AE2, by the same team which led the successful search to find AE1 and delivered the Silent Anzac project to protect, preserve and tell the story of her sister ship HMAS AE2 .

The AESMF will also be campaigning to ensure the Papua New Guinea and Australian Governments declare AE1 a protected area – as is appropriate for the grave of 35 of our first submariners.

To gather this data an instrumentation system will be moored close to the submarine for a 12-month period.

The instrument package data is required as the final, key step of a non-invasive archaeological survey and analysis of AE1.

The data will complete the analysis, provide the base line for future monitoring and establish a world class standard for future archaeological assessments of Australian maritime wrecks.

This information will be a critical input to the wreck management plan to be developed jointly by the Papua New Guinea National Museum and Art Gallery, Australian National Maritime Museum and AESMF team to protect and preserve AE1.

We seek your help with funding or in-kind support to cover the costs of the project, estimated at \$120K.

The men of AE1 have been found – can you assist in the effort to protect and preserve their resting place?

Lest we forget.

Supported by

