



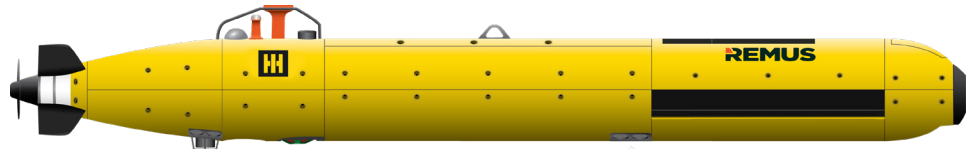
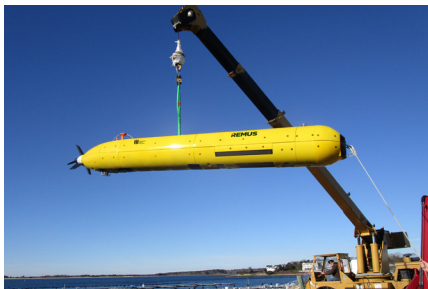
NEW GENERATION

# REMUS 6000

## Unmanned Underwater Vehicle

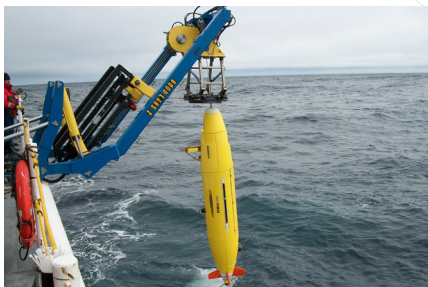
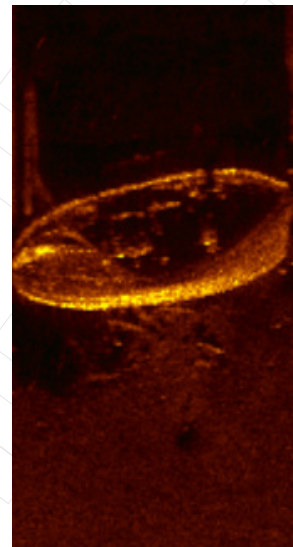
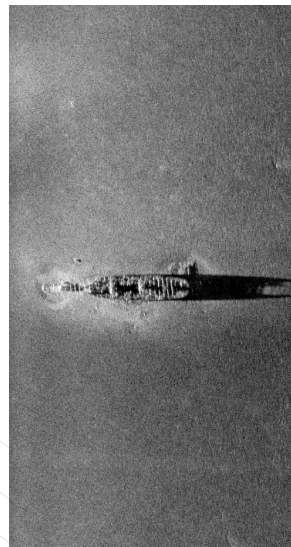
The new generation REMUS 6000 has been redesigned to increase modular payload space, allowing integration of multiple advanced sensors. Reaching depths of 6,000 meters, this deep-water unmanned underwater vehicle can survey 98% of the ocean for a variety of applications.

The open architecture and modularity of the REMUS Technology Platform facilitates increased capabilities, interoperability and applications while decreasing risk and cost.



### Key Features

- Large-class UUV
- 6,000-meter depth rated
- Up to 25 hour mission duration
- Speeds up to 4.2 knots
- Open architecture
- Increased modular payload capacity
- Swappable battery bottles
- Advanced sonar options
- Proven stern/side launch and recovery system



### Applications

Given the stability and versatility of the REMUS 6000, there are numerous applications possible, including:

- Search and recovery
- Hydrography
- Geothermal vent research
- Tectonic plate research
- Deep sea mineral exploration
- Treasure hunting
- Marine research
- Fisheries research
- Environmental monitoring
- Oil and gas infrastructure monitoring
- Marine geology



HII.COM

Approved for Public Release

# REMUS 6000 Unmanned Underwater Vehicle

## Specifications

Standard Specifications, Sensors and Payloads	
Depth Rating	6,000m (3.73 miles)
Diameter	80cm (31.5 in.)
Length	Approximately 5.2m (17 ft.)
Weight	Approximately 1,630kg (3,600 lb.)
Speed	0-4.2 knots (0-2.16 m/s)
Estimated Endurance	Up to 25 hours at 3.0 knots (1.5 m/s)
Energy Storage	Three 5.85 kWh swappable lithium-ion battery bottles for a total of 17.55 kWh of energy
Recharge Time External to Vehicle	About 24 hours
Propulsion and Control	Direct drive DC brushless motor, open 2-blade propeller; four fins for control (yaw, pitch and roll)
Communications	WHOI micromodem acoustic communications; WiFi; Iridium
Antenna	GPS, WiFi, Iridium (customer must provide SIM card)
Navigation	Commercial GPS; Long Baseline (LBL); doppler-assisted dead reckoning; Inertial Navigation System (INS); terrain following
Sonar	Synthetic Aperture Sonar (SAS)
Other Standard Sensors	Doppler Velocity Log (DVL); CT sensor; pressure sensor; Sound velocity probe; Ultra-short baseline (USBL) options
Camera	Stereo camera with LED light array
Hard Drive	Two 8 TB swappable data bottles; additional data bottles optional
Warranty	Standard one year warranty; warranty options available
Software	Vehicle Interface Program (VIP) for mission programming and post-mission analysis
External Connections	Gigabit ethernet; Vehicle power/charging (220V)
Tracking	Ranger and VIP software via towfish communications; mission monitoring; re-direct, loiter and abort commands
Safety Features	Ground fault detection; leak detection; forward-looking sonar; emergency strobe; ascent weight
Operations	Capable of operating multiple REMUS vehicles simultaneously
Auxiliary Equipment Options	Shipboard console/mast; power box with battery charger; antenna box; ACOMMS bottle; shipboard cables; ranger and towfish; ruggedized laptop; vacuum pump; vehicle maintenance cart; operation and maintenance spares
Alternative Sensors, Payloads, Software and Equipment*	
Sonar	Dual frequency side scan sonar with bathymetry option; multibeam sonar; gap-filling sonar; sub-bottom profiler
Sensors	Eco puck triplet; oxygen sensor
Software	SeeByte SeeTrack and Neptune; REMote CONTROL (RECON); Reflection Post-Mission Analysis
Launch and Recovery System	Proven A-frame system that can launch and recover the UUV from the stern or side of a vessel

\*Please inquire on pricing for integration of alternative sensors, payloads, software and equipment, including any not listed above.

© 2022. Performance specifications are approximate and may vary depending on vehicle configuration, operational specifics, and environmental conditions. Specifications are subject to change without notice.



HII.COM

### ABOUT US:

World leading autonomy and multi-domain autonomous systems making vast expanses of the earth accessible for defense, research and commerce.

### LEARN MORE:

USA: +1 508-563-6565  
Europe: +44 2392 417 222  
usa.sales@hii-tds.com