

Teledyne BlueView

# M900 Series

## 2D Imaging Sonar

The most compact, full featured 2D Multibeam Imaging Sonar available. The M Series fits where other multibeam imaging sensors can't, delivering crisp, real-time streaming sonar imagery. The M Series is:

- Smallest in class:  $\approx 95 \text{ in}^3$  (1557  $\text{cm}^3$ )
- Lightest in class: < 1.1 lbs. in water
- Widest field-of-view in class: 130°
- Lowest power in class: < 20 watts
- Built-in target detection and tracking feature
- Capture sonar, video, and position data in software package

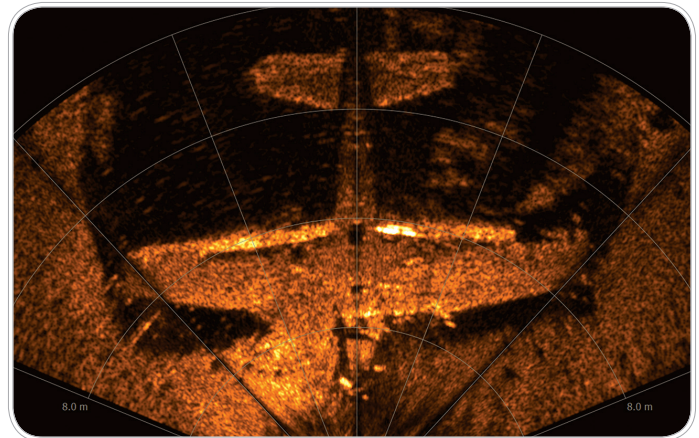
**ProViewer®:** Delivered with each M Series sonar enabling immediate out-of-the-box operation PC with a Windows® based PC, no licensing fees required. Features:

- Intuitive, easy-to-use interface
- Crisp, detailed real-time imagery
- On the fly point-to-point measurements
- Video synchronization
- Georeferencing
- Movie exports
- Track multiple targets simultaneously
- Streaming data for automated navigation & OAS
- Enables ROV dynamic positioning
- Easy movie exports



**Software Development Kit (SDK):** Sold separately, the Teledyne BlueView SDK enables sonar integration into complex platforms and/or customized systems by enabling control of the sonar with access to raw data files to control sonar operation and enable data flow-through. Features:

- Single .zip file
- Windows® and Linux versions available
- C/C++ libraries included
- Documentation to review architecture and logic
- Reference manual and step-by-step guide
- Example files



*Sunken WWII Grumman F6F Hellcat Fighter Aircraft.*

### PRODUCT APPLICATIONS

All M Series sonar operate while in motion or from a stationary position delivering real-time imagery and data.

- ROV navigation
- Object detection
- Target tracking
- Obstacle avoidance
- Operations monitoring
- Equipment/tool placement
- Search and recovery
- Area survey

# M900 Series

## 2D Imaging Sonar



### TECHNICAL SPECIFICATIONS

		M900-90	M900-130
<b>Sonar</b>	Field-of View	90°	130°
	Max Range	100 m (328 ft)	100 m (328 ft) / 20 m (66 ft)
	Optimum Range	2-60 m (6.6-197 ft)	2-60 m (6.6-197 ft) / 0.5-7 m (1.6-23 ft)
	Beam Width	1 x 20°	1 x 20° (900k Hz) / 1 x 10° (2250 kHz)
	Beam Spacing	0.18°	0.18°
	No. of Beams (90, 130 FOV)	512	768
	Range Resolution	1.3 cm (0.54 in)	1.3 cm (0.54 in) / 0.6 cm (0.25 in)
	Update Rate* within Optimum Range Operating Frequency	Up to 25 Hz 900k Hz	Up to 25 Hz 900 kHz / 2250 kHz
<b>Interface</b>	Supply Voltage	12-48 VDC	12-48 VDC
	Max Power Consumption**	20 W	2250 kHz - 25.8 W 900 kHz - 20 W
	Connectivity	Ethernet	Ethernet
<b>Mechanical</b>	Weight in Air (std/deep)	4 lbs / 10.54 lbs	4.3 lbs / 11 lbs
	Weight in water (std/deep)	0.86 lbs / 5.09 lbs	0.95 lbs / 5.1 lbs
	Depth rating (std/deep)	1000 m (3280 ft) / 4000 m (13120 ft)	1000 m (3280 ft) / 4000 m (13120 ft)
	Dimensions*** (L x W x H) (std/deep)	7.56 in x 4.0 in x 4.0 in (4.0 inch can) / 10.2 in x 5.0 in x 5.0 in (5.0 inch can)	8.6 in x 5.0 in x 5.0 in (4.0 inch can) / 10.5 in x 7.7 in x 5.0 in (5.0 inch can)

\* Range-dependent

\*\* Non-VDSL unit at 24 VDC

\*\*\* Length does not include connector length



The Teledyne BlueView M900-30 Sonar accessories and case.